



# BEACHPORT FORESHORE

## BEACHPORT FORESHORE

### FACT SHEET

#### Key focus of investigation: Reduce the impacts of coastal processes on the town beaches of Beachport

Building on previous work, Council engaged coastal consultants, Baird, to collect local metocean data that could be used to investigate the impacts of coastal processes on the town beaches of Beachport and potential management options.

These options were identified from concepts raised in community discussion, previous studies, and the assessment of key coastal processes in the technical study. A scientific base model built with local coastal data was used to forecast the success of viable management options and identify preferred options. This project was co-funded by the Coast Protection Board.



**A full description** of the analysis can be found in the technical report, *Rivoli Bay Data Collection and Modelling*

**A summary** of the technical report has been prepared and can be found in *Rivoli Bay Summary Report*

#### WHAT WE LEARNT?

The technical study established that beaches along the Beachport foreshore are 'full' or at capacity except for Beach 8. Here, the groynes to either side (Groynes 8 and 9) are incorrectly positioned to maintain a wide beach, and that alterations to the existing structures are required. The detailed assessment recommended a combination of options to deliver the best results. The optimised option involves:

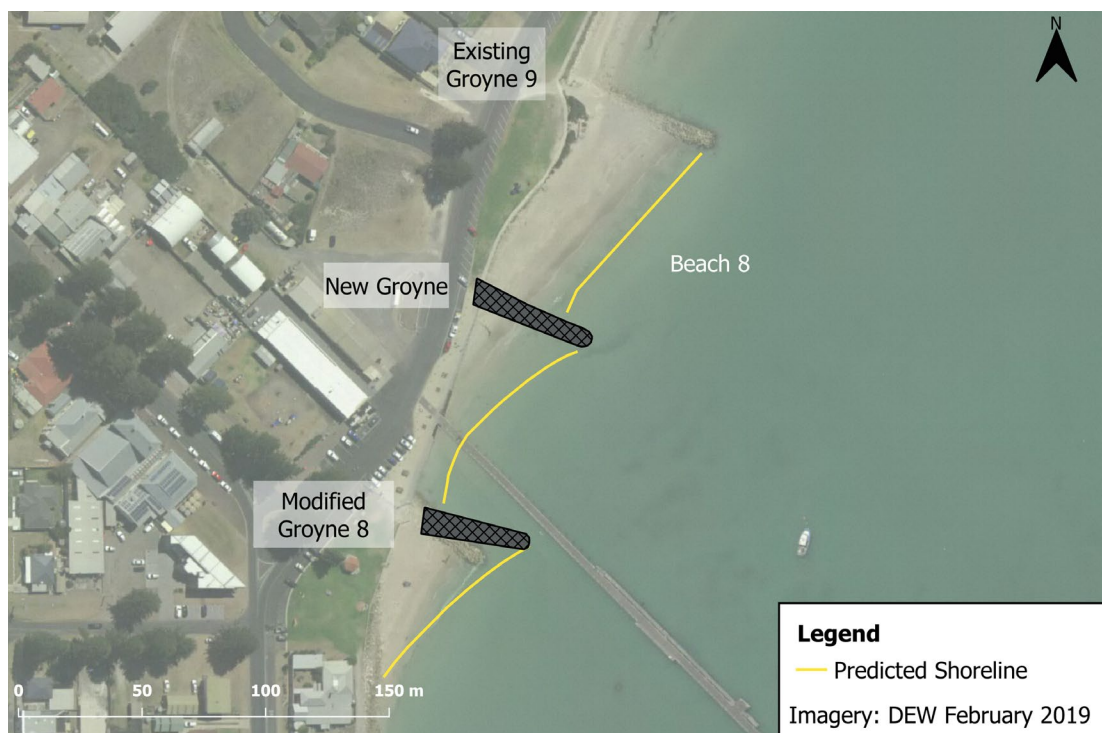
Extending Groyne 8 to a total of 44m in length

Rotating the seaward end of Groyne 8 north by 20°

Constructing a new 38m long groyne in the centre of Beach 8

Sand nourishment during construction of the new groyne

Lowering the crest height and removing the landward connection of groynes south of the Beachport Boat Ramp to allow sand to bypass sections.





# BEACHPORT FORESHORE



## WHAT NEXT?

Further investigation of the full costs of this pathway including construction, ongoing maintenance costs, and initial sand nourishment costs is needed, along with consideration of the social and environmental benefits and constraints. This whole of life cost benefit analysis would be presented to Council and the community for consideration against alternative adaptation pathways such as retreat. Further to this, the option needs to be assessed alongside the proposed recommendations for the Beachport Boat Ramp to ensure any potential changes are complimentary and support an integrated approach across all Beachport town beaches.

This fact sheet is part of a series summarising the investigations into:

- Coastal Processes across Rivoli Bay
- Beachport Foreshore
- Beachport Boat Ramp, and;
- Southend Foreshore

