

# WORKSHOPS

**South Spore** – Location TBC

Mushroom Walk & Fungi Identification Tours

May 18, June 1, 15, 29, July 13

Bookings <https://bit.ly/4aSDIIV>

**Post and Rail Online Classes:**

Making Fresh Cheese, Sour Dough &  
Preserves

<https://bit.ly/3xPB73C>

**Rationally Wasted Artists Walk & Talk**

17, 21, 29 May (Times TBC)

<https://bit.ly/3UCDtvl>

& 2 June @ 2pm-4pm

Millicent Gallery

<https://bit.ly/3vIISZx>

**Rationally Wasted Workshops**

2 June @ 10- 12pm Millicent Gallery

<https://bit.ly/3J1WkK3>

## RE-CHARGE

Collect a **Second Hand Book** @ Millicent  
Library or Visitor Information Centre

Take a Stroll around **Lake McIntyre**

<https://bit.ly/4bhrObo>

**The Domain 'Nature Play Area'**

<https://bit.ly/3wnduit>

**Beachport Conservation Park  
& Canunda National Park**

<https://bit.ly/3UE5xil>



# EXPRESSIONS OF INTEREST FOR 2025

**PLEASE EMAIL -**

[events@wattlerange.sa.gov.au](mailto:events@wattlerange.sa.gov.au)

We are looking at getting a  
committee together and hosting a  
bigger and better festival in 2025

## COMPETITION

Wattle Range Youth

Tricky Waste Video Competition

A total of \$3000 up for grabs  
(12-25 year olds)

Entries close 22 July 2024

**ENTER  
NOW!!**



Millicent Visitor Information Centre 0887330904  
[www.facebook.com/MillicentVisitorInformationCentre/](http://www.facebook.com/MillicentVisitorInformationCentre/)

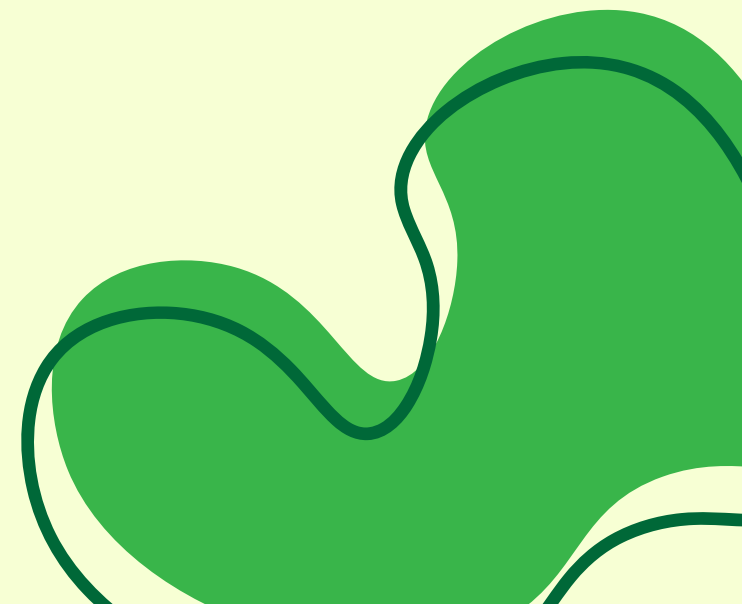


# RE-A-RANGE

## A SUSTAINABILITY WEEKEND

### 1ST & 2ND JUNE 2024

### WATTLE RANGE & LIMESTONE COAST



# SATURDAY 1ST JUNE

## **Millicent Showgrounds Market & Car Boot Sale**

10am-2pm <https://bit.ly/3U7Np04>

## **Kalangadoo Market**

10am-1pm <https://bit.ly/3nrwvEP>

## **Millicent Gallery**

### **Rationally Wasted Exhibition**

9am-12pm Saturday & 12pm-4 pm Sunday

Opening May 5th till June 11th <https://bit.ly/430Ik13>

## **Millicent Op Shops**

10am -12pm Lifeline, St Vinnies, Salvation Army,  
The Lioness Book Shop & Walnut Shop

<https://bit.ly/3Uij25X>

## **McCourt's Garden Centre**

9am -3pm Learn all things Worm Farm, Eco  
options & Re-Laid Aprons on offer

<https://bit.ly/44mhk89>

## **Millicent Art & Craft Centre**

10am -3pm Pop in & view Potters & enquire  
about joining classes, Fifth Street, Bookings Lyn -

0458911987

## **Millicent Bottle & Can Depot**

9am-12pm Recycle your containers, pick up  
Service available. - 87334926

<https://bit.ly/3PstZcQ>



# SUNDAY 2ND JUNE

## **Mt Burr Trails Morning Walk & Cultural Session with Uncle Doug**

9am - Brown Street, Mt Burr

congregating at the newly completed 'Meeting'  
Circle' Sponsored by the Landscape Board of SA

<https://bit.ly/3UBoJx0>

## **McCourts Garden Centre**

9am -3pm Learn all things Worm Farm, Eco  
options & Re-Laid Aprons on offer

<https://bit.ly/44mhk89>

## **Millicent Art & Craft Centre - Pottery**

10am - 3 pm Pop in & view Potters & enquire  
about joining classes, Fifth Street

Bookings Tony 0417332646

## **Grow your own Gourmet Mushrooms**

11am - Learn with Feresh from South Spore,  
Millicent Community Garden, Fifth Street,

Bookings <https://bit.ly/3xYr3FB>

## **Millicent Adventist Church Op Shop**

10am-1pm <https://bit.ly/3Uij25X>

## **Rationally Wasted Workshops**

10am-12pm Millicent Gallery

<https://bit.ly/3J1WkK3>

## **Rationally Wasted Artists Walk & Talk**

2pm-4pm Millicent Gallery

<https://bit.ly/3vllSZx>

## OTHER BITS

## AND BOBS

### **Millicent Repair Café**

Open @ 10am - 12pm

18 May, 15 June, 13 July, 10 Aug

Men's Shed , Fifth Street

<https://bit.ly/3Qr5ofz>



### **Wattle Range Residents & Ratepayers can access:**

#### **FREE Garden Mulch**

10am-2pm on 19th May & 16th June,

Millicent Sale yards

<https://bit.ly/3WmcFB8>

### **Millicent Resource Recovery Centre**

Open 9am -2.30pm - Saturday & Sunday

<https://bit.ly/3Wqycsi>

### **Soil FoodWeb Institute**

12 Ridge Terrace, Millicent

<https://bit.ly/3xT5Yw9> & <https://bit.ly/4bghtMM>

### **Millicent Business Community Association (MBCA)**

Sustainable friendly businesses

<https://bit.ly/44rCull>

### **Transmutation - Recycling & manufacturing business @ Robe**

<https://bit.ly/3xX1FAa> & <https://bit.ly/4djy8ko>

### **Tours & Drives:**

#### **Ghost Mushroom Guided Tours**

<https://bit.ly/44kiroU> &

#### **Woakwine Windfarm Tourist Self Drive**

<https://bit.ly/3J0smWL>