



MOUNT BURR COMMUNITY TOWN PLAN

“Hell it's good out here.”



Table of Contents –

I	Executive Summary
II	Purpose of the Town Plan
III	History of Mount Burr
IV	Mount Burr Today
V	Location
VI	What Makes Mount Burr Unique?
VII	Vision Statement
VIII	Products and Services
IX	What Does Mount Burr Need?
X	Marketing and Promotion
XI	Projects and Priorities



Executive Summary

Mount Burr is a unique town that has had its share of ups and downs. From the prosperous times through the seventies and eighties to the horrific Ash Wednesday bush fires and the crushing blow of the mill closure, Mount Burr has survived with a strong sense of community and resilience.

The intent of this Plan is to provide existing and future residents of Mount Burr with direction and guidance that will help influence the future of the township for the next 20 years. Importantly, the plan provides a reference point for development and planning priorities and a point from which progress can be monitored.

The Plan enables the community, in partnership with the Council, to place an importance on future development that enhances the unique qualities of Mount Burr, encourages prosperity and ultimately, enhances the quality of life for all.

Purpose of The Town Plan

The idea of a town plan arose out of general discussions between Wattle Range Council staff and the Mount Burr Sport and Progress Association.

Essentially the Mount Burr Community Town Plan provides:

- An opportunity to articulate the issues that are important to Mount Burr residents.
- A clear blueprint for the future development of the Mount Burr township and surrounding region.
- A basis to attract local and state funding to help achieve identified community priorities and projects.
- A coordinated approach for the social, cultural and economic development of the township and surrounding enterprises.
- To put Mount Burr on the map as a tourism destination.
- Promoting Mount Burr as a great place to live or visit.
- To enhance the quality of life for residents.

The History of Mount Burr

Mount Burr was named after the mountain “Mount Burr” about 7 km south of the town. The mountain was named by Governor George Grey after George Burr, a surveyor and Professor of Mathematics accompanying Grey on an expedition in 1844. Mount Burr (the mountain) is just one of 15 dormant volcanoes in the region including Mount Graham to the north and Mount Muirhead to the west.

Established in the 1930's by the SA Government, the township was built to provide homes and a community for forestry workers, most of whom worked at the local timber mill. Built in 1931, the mill was the first of its kind in the region and considered a turning point for industry on the Limestone Coast and indeed, SA forestry in general.

Mount Burr flourished for many years to become a prosperous and strong community. At its peak in the eighties and nineties Mount Burr had a population near 600 with shops, a school, churches, sporting and social clubs and police station.

The strength and resilience of the community was evident during the Ash Wednesday bushfires in 1983 when the town was miraculously saved after being surrounded by raging fire. Unfortunately, the town's resilience was tested again in 2000 when the timber mill closed, leaving many employees without work and forcing many families to leave in search of work.

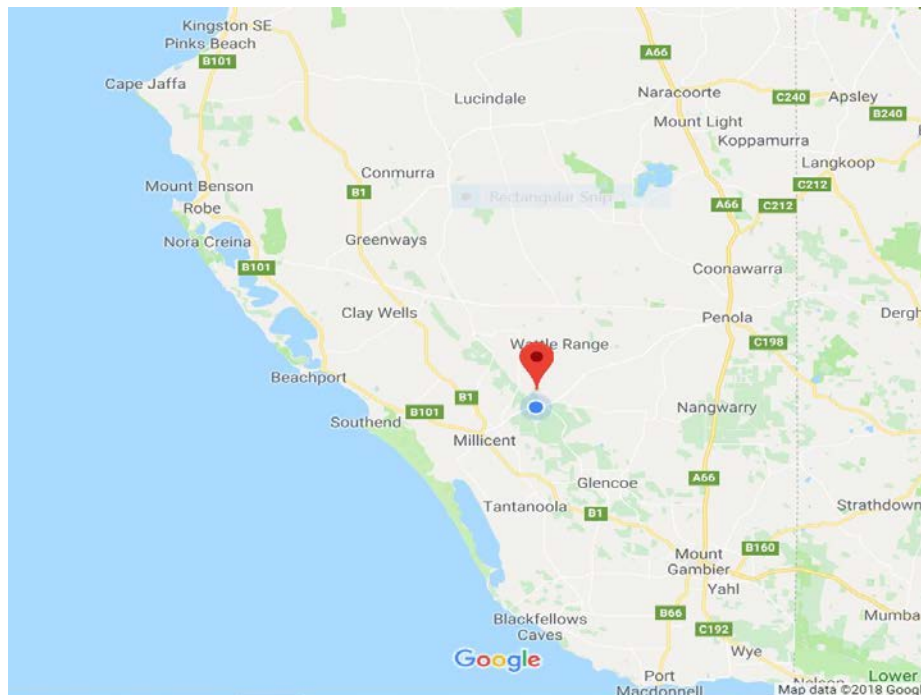
Mount Burr Today

Mount Burr has become a somewhat quieter and more peaceful place to live over recent decades, while still providing a strong community hub for the many families remaining in town and surrounding regions. Mount Burr is still a picturesque town with a primary school, strong sporting clubs, a general store and post office.

According to the 2016 Census, Mount Burr had a population of 361 people with 48% male and 52% female. There were 100 families with the median age of 49 years. The population dominant age group is 55-59 years. Children aged 0-14 years make up 17% of the population while people over 65 years made up 23%.

In the 2016 census employment data showed the top five occupations were labourers (34), machinery operators and drivers (17), technicians and trade workers (16), sales (13), and managers (9).

Location



Mount Burr is ideally located central to most of what the Limestone Coast has to offer. It is only 10 minutes' drive to Millicent, 30 minutes to Beachport, Penola and the Coonawarra wine region, 1 hour to Naracoorte and Robe and only 40 minutes to Mount Gambier.

What Makes Mount Burr Unique?

Mount Burr is unique in many ways, not least being its idyllic valley location within the Mount Burr Range in the heart of the Limestone Coast. Surrounded by pine plantations and framed within expansive grassed buffer zones, Mount Burr with its majestic trees and quaint cottages paint a pretty picture in any season. There are many more words to describe the unique qualities of Mount Burr with just some of them highlighted below.



Vision Statement

A town that will remain a beautiful, peaceful and safe place for people to live with a great sense of community and pride.

To enhance the unique qualities of Mount Burr while bringing new life and prosperity.

Products and Services in Mount Burr and Surrounding Region

- Agriculture (Beef, Crops, Dairy, Sheep & Wool)
- Bed and Breakfast Accommodation
- Cardboard Recycling
- Country Fire Service
- Cricket Club
- Football Club
- Forestry
- General Store
- Golf Club
- Home Based Businesses
- Kindergarten
- Netball Club
- Photography businesses
- Post Office
- Primary School
- Quarries
- Transport Company

What Does Mount Burr Need?

- Industry and Business
- Tourists
- Maintenance
- Rejuvenation
- New Residents

Please refer to list of projects and priorities included within the document.

Marketing and Promotion

Marketing and promotion for Mount Burr is largely restricted to a social media and web presence from the following:

- Australia Post
- Burr Cottage B&B
- The Old Mill Country Retreat B&B
- Hands with Heart Massage Therapy
- Wells Transport
- Mount Burr Primary School

- Mount Burr Football, Cricket and Netball Club
- Mount Burr General Store
- South East Media SA

Marketing and promotion will play a pivotal role in attracting future residents, tourists and businesses to the area. Promotion of the region could be enhanced with:

- Interpretive signage about the history of the mill and forestry in general.
- Attractive signage at entrances to the town.
- Street signage directing people to Mount Burr from outside of the area.
- Ensuring relevant brochures and information are available at Wattle Range Visitor information centres.
- Highlighting the central location of Mount Burr within the Limestone Coast.

Projects and Priorities

Priority: A=1-2 years B=3-4 years C=5-8 years D=9-12 years E=13-17 years F=17-20 years

ASSETS AND INFRASTRUCTURE

PRIORITY	PROJECT	WORKING GROUP	COMMENTS
A - B	Improved street lighting	WRC/SA Power	Installation of new street lights in “black spots” in town. Areas identified are: 1. Thomas Rd at the entrance to football club. 2. Riddoch Avenue near houses 31-23. 3. Gray Terrace near school yard. 4. Other lights as deemed necessary.
A	Footpath & Walkway upgrade	WRC	Establish footpath the length of Thomas Drive including path from general store to the new post office. Very unsafe as disabled having to use road as unable to push wheelchairs on grass and uneven surface. Thomas Drive is busy road with school, shop, and post office. Could use part of the access roads but these need better foundations, not just graded but compacted fill and ongoing maintenance.
B	Establish RV park	WRC/Mt Burr footy, cricket & netball clubs	To discuss with clubs if using the grounds is viable as RV park. Issue of toilets, showers. Potential for the site to be on Pettman Terrace near proposed CFS building. Shower and toilet could be utilised by both CFS and RV park users.
B	Bus and truck parking facilities	DPTI/WRC Community	Find area suitable adjacent to shop. Maybe utilise old bus shelter that is currently there. Stateliner goes through twice a week. No designated area to wait for bus or to safely alight.
B	Stormwater retention pond behind the shop on Pettman Terrace - untidy mosquito haven, subject to flooding - requires redesign and landscaping.	WRC/Community	Landscaping with rocks and plants to make it more functional and natural in appearance.
C	Replacement or repair of unsightly rusted stobie poles.	SA Power Networks Community	

CHARACTER AND APPEARANCE

A	New Mount Burr town entrance signs at both ends of town with garden plantings.	WRC / Mens Shed?/ volunteers	Maybe timber and iron or large old saw shape. Rock gardens around signs could be established by group of volunteers with easy-care water-resistant plants. Men's Shed could perhaps assist with making sign.
A-B ongoing	Unsightly abandoned and derelict buildings to be removed or screened from view.	WRC/ community/school	Notices issued by council – ongoing. Tree screens to be planted along fence lines.
B	Plant trees (bird attracting such as bottle brush and grevilleas) around perimeter of old mill to disguise. This unsightly mill has been an issue that was tabled to council for action in 2010 by Mount Burr residents.	WRC / Volunteers/ Primary School	Primary School children could help assist with planting or caring of trees. They could be given some trees each to nurture.
B	Landscaping in front of shop area.	WRC / Volunteers Community	There is a need to level out area and then grass, plant out, put in seating etc.
C	Plant a few fruit trees that are in an area accessible to community.	WRC/ provide trees and fertilisers etc. Volunteers to prune and maintain, clean up dropped fruit.	Could be located at end of Pettman Terrace where apricot tree currently exists or alongside of school on Gray Terrace.
B	Replace any trees cut down due to disease or damage with another tree. Have a street tree in front of every house. Better maintenance of the trees leading into town with trimming and removal of fallen branches on a regular basis.	WRC / Volunteers Community	Could ask residents without street trees if they would prefer one via Mount Burr Community Page or letterbox drop (volunteers could do this). Could give details to council of where to plant to avoid unwanted trees being planted and then destroyed.
C	Plant more autumn trees leading into both ends of Mount Burr.	WRC	Make it an attraction that people will come to see. “The town of autumn colour in the Limestone Coast region”.

RECREATION, PROMOTION, MARKETING AND EVENTS

A-F: projected timeframes outlined in attached proposal.	Mount Burr Recreational Trails Network is a comprehensive long-term project. The proposal looks to utilise degraded and unused sites around the township to enhance the existing tranquil surrounds that visitors and residents of the town remember fondly. Building upon the towns relaxing reputation the proposed project aims to establish the township of Mt. Burr as a hub for family friendly, nature-based activities.	Involvement of several government bodies, local businesses, local contractors, primary industries and most importantly, community residents.	Refer to: "Mount Burr Recreational Trail Network - <i>Project Proposal</i> " Proposal compiled by: Thomas Josephs Ph: 0427 396 572 southeastvegetationservices@outlook.com
A-B	More signage directing to Mount Burr.	DPTI and WRC	The areas suggested as requiring signage are to Mount Burr from Penola on the Mount Burr Road, the Mount Gambier to Millicent road at the Agriculture Bureau Road intersection and at the Mount Burr Road and Agriculture Bureau Road.
B	Lottery fun run.	Organised by volunteers, football & netball committee members. Promotion from WRC, Facebook page, sponsors etc.	From the football club into the forest returning to the club. All entrants pay a fee and receive a ticket once they have completed the course. The winner is the one whose number is drawn out. Small prizes could also be awarded to the 1 st and 2 nd person to complete the course. This could be used as a fundraiser for the football and netball clubs or for a Mount Burr community project.

Mount Burr Recreational Trail Network
- *Project Proposal*

Proposal compiled by:
Thomas Josephs
Ph: 0427 396 572
southeastvegetationservices@outlook.com

Mount Burr
Recreational Trail Network
- *Project Proposal*
2018

Table of Contents

1.0	Executive Summary.....	3
2.0	Project Objectives.....	4
3.0	Project Proposal.....	5
4.0	Key Sites & Points of Interest.....	6
5.0	Project Benefits.....	8
6.0	Project Partners.....	10
7.0	Funding & Investment.....	10
8.0	Complimentary Projects & Infrastructure.....	11
9.0	Town Events.....	12
10.0	Site Maps.....	13
11.0	Photographs of Interest.....	14
12.0	Initial Stages of Project Development.....	15
12.1	Projected Timeframes.....	16
13.0	Stage One – Mt. Burr Recreation Park.....	17
13.1	Stage One – Prioritised Actions.....	18
13.2	Stage One – Project Costing Requirements.....	19

Mount Burr Recreational Trail Network
- *Project Proposal*

1.0 Executive Summary

Mount Burr Township has a population of 361 people and is situated approximately 12km NE of Millicent, 50km SW of Penola and 50km NW of Mount Gambier.

Due to the geography of the Mount Burr Ranges the township acts as a gateway between currently recognised local tourism assets along the coast, Canunda National Park, Southend, Beachport and our world renown wine region, Penola and Coonawarra.

The township was built around a once thriving timber production industry but now lacks the support of a consistent source of income for residents since the evolution of industry forcing the closure of the Mount Burr Mill in 2001.

Future regional opportunities get placed in the hands of promised employment through large outside investment. Unfortunately the majority of prospects never evolve past feasibility studies with the South East quite often losing out to regional counterparts.

As our younger residents are reluctantly required to move abroad to secure employment our region loses out on creative input to move the region forward creating a difficult cycle to break.

Future growth in industry technologies suggests that several current employment sources supporting residents are unlikely to exist as we now know it in the future. This means that unemployment levels amongst residents are likely to rise unless there is an assertive effort to establish a backup industry that is in a state of growth.

Nature based tourism is such an industry that is in a state of continual growth and is only limited by what a region has got to offer its visitors and how well that region plays host to said visitors.

The Mount Burr Ranges in itself is a largely underutilised tourism asset for the region full of unique nature based experiences.

Early forestry history in the region has shaped a unique combination of primary industry side by side with conservation making our region a leading example worldwide of sustainable practices.

The Mount Burr Ranges affords many exclusive visitor experiences with unique cultural heritage sites, early settler history, forestry arboreta, volcanic history and geography creating many scenic lookout points, and remnant Native Forest Reserves containing some of South Australia's most diverse flora and fauna.

There is an apparent opportunity to utilise proactive measures to establish the township of Mount Burr as a hub for nature based tourism along the 'Limestone Coast Driving Loop' by utilising existing, unique assets and investing in strategic placement of infrastructure throughout the Mount Burr Ranges.

Improving current tourism infrastructure will create opportunities for entrepreneurial business investment in accommodation, hospitality, tour operations, equipment hire, local producers, and entertainment helping to stimulate economic growth for the region.

Establishment and future maintenance of trails and infrastructure will generate employment opportunities for local businesses and contractors involved with conservation, landscape maintenance, construction, and manufacturing.

Mount Burr Recreational Trail Network
- *Project Proposal*

2.0 Project Objectives

Mount Burr Ranges Recreational Trail Network project aims to:

- Enhance Mount Burr's current peaceful setting by improving degraded sites and introducing safe, family friendly experiences to the town and surrounds.
- Establish Mount Burr as a relaxing destination for nature based activities on the 'Limestone Coast Driving Loop'.
- Introduce sufficient structured experiences to reach a tipping point that requires visitors to stay in Mount Burr for numerous days to see all on offer.
- Utilise Mount Burr as a 'Trail Head' (start/finish of trail network) to offer healthy interactive experiences through a structured shared use trail network, creating safe family friendly access to unique points of interest throughout Mount Burr and the Ranges.
- Capitalise on the expanding 'Nature Based Tourism' industry promoting the town as an accessible way of exploring the Australian bush solidifying the town as a leader and major asset for the South East.
- Invest in simple infrastructure to capitalise and enhance existing local assets to stimulate business investment opportunities and economic growth for the town.
- Create unique outdoor spaces to be used for community events and festivals.
- Create ongoing future benefits and opportunities for residents of the town.
- Engage local residents in a community driven project encouraging all residents to take part in shaping the towns future.
- Engage young residents in planning and implementation of project stages allowing them to take ownership and pride in community spaces.
- Establish outlets for young residents to connect with and benefit from safe, healthy outdoor activities.
- Develop Mt. Burr and the ranges into a training & breeding ground for professional athletes in mountain biking.
- Improve the natural environment by introducing native flora species from the Mount Burr Ranges to appropriate degraded sites around the town.
- Promote healthy living in a sustainable environment.

Mount Burr Recreational Trail Network
- *Project Proposal*

3.0 Project Proposal

Mount Burr Recreational Trails Network is a long term project to be implemented in stages with strong involvement of several government bodies, local businesses, local contractors, primary industries and most importantly, community residents.

The overall proposal looks to utilise degraded and unused sites around the township of Mt. Burr to enhance the existing tranquil surrounds that visitors and residents of the town remember fondly.

Building upon the towns relaxing reputation the proposed project aims to establish the township of Mt. Burr as a hub for family friendly nature based activities.

The project aims to establish a stack loop network of shared use recreational trails throughout Mt. Burr.

Mt. Burr town trails network is designed in such a way to capitalise on unique points of interest linking them together in a structured format to enhance the overall user experience.

Strategic design of the town trail network enables future linking trails to be connected to towns of interest in all directions along the 'Limestone Coast Driving Loop'.

Beyond establishment of a structured town network, further trails and complimenting infrastructure may be developed in partnership with Forestry SA throughout the Mount Burr Ranges.

Further mountain bike specific trails of cross country and downhill disciplines throughout the Mount Burr Ranges linked to the town recreation park mountain bike zone will enable professional events to be held in the town such as 'Burr to Bluff Cross Country MTB Race' (*see Town Events section*).

Establishing unique community event areas offers opportunities to host annual events within the town (*see Town Events*).

Initial stages of development would see the introduction of 'Mount Burr Recreation Park', containing a network of shared use walking and cycling trails.

A disused 20Ha site directly adjacent to the south of the township affords the perfect opportunity to establish this.

This site is situated on the northern face of Mount Muir. Due to the sites elevation numerous lookout points highlight the regions beauty with views over the township, Gran Gran Corner, undulating hills of pine plantation & native forests, across agricultural redgum country towards Coonawarra and glimpses of sand dunes towards Beachport.

A 'trail head' information hub at the front of the town playground site would then be established linking Mount Burr Recreation Park trails to the centre of town and enable future trails to be added to the network in stages from this point outwards.

The development of further trails and required infrastructure upgrades will be dependant on trail use, visitor traffic and community feedback post completion of initial stages.

4.0 Key Sites & Points of Interest

Currently, discussions have already taken place with Forestry SA and Wattle Range Council regarding ownership of key sites and gaining permissions for future use.

Forestry SA is currently assisting with establishing ownership of the proposed site to create 'Mount Burr Recreation Park' with further consultation planned in the near future.

Notable key sites, walks and trails to capitalise on unique local assets include:

Mt. Burr Recreation Park / Lookout Loop / Hollow Tree Trail: a series of stacked loop trails with numerous lookout points towards the summit. Strategically placed bird hides to capture views of indigenous fauna including birds, kangaroos, wallabies, possums, bats and more. Educational information signage about native flora and fauna species and historical points of interest.

Mountain bike specific trails and skills park designed for progression skills development in rapidly growing sport of mountain biking. Trails would offer safe entry level riding through to intermediate trails.

Community event areas to be used for unique annual events.

This area can potentially contain complimenting interactive sculptures of different mediums.

Nature Play / Mini Loop Trails / Interactive Sensory Trail: nature play space at existing town playground site with simple walking & biking tracks for young parents and toddlers ('Toddler Trails'). Interactive stations may be incorporated to encourage young toddlers to engage with natural surrounds. This trail may be designed to cater for wheelchairs and elderly offering interactive experiences to connect with natural surrounds.

Pettman Tce. Town Timeline Walk / Native Display Gardens: town and regional history displays set in a timeline along the walk accompanied by pockets of landscaped indigenous gardens including information signage regarding plant names and flora and fauna found throughout the Mt. Burr Ranges. Information signage along this trail would persuade visitors to explore other trails throughout the Mt. Burr Ranges encouraging tourists to either spend more time in the region or come back another time.

Poplar Tree Trail: simple short walk loop trail throughout poplar plantation linked to the top of Pettman Tce. Timeline Walk. More poplar trees may be planted to link this site to Pettman Tce. parklands enhancing the trail during the Autumn period & maybe marketed as the 'Leafy Loop Trail'. This site is already extremely popular with photographers and can only be improved by the addition of simple infrastructure.

Mt. Burr Township Family Loop Trail: simple, easy terrain, shared use walking and biking trail around the town perimeter linking top of the 'Poplar Tree Trail' and ending at Nature Play Space/Information Hub. Simple rest areas with seating and bike racks made from local timbers. This trail would incorporate numerous town trails along the loop.

Mount Burr Recreational Trail Network
- *Project Proposal*

Mt. Burr Memorial Loop Trail: short walk loop trail from Pettman Tce., around sports ground to war memorial, through to Mt. Burr General Store and back to Information Hub. This trail along with Town Timeline Walk would encourage passing visitors to stop, stretch their legs and direct them to the general store. Information signage along this trail would persuade visitors to explore other trails throughout the Mt. Burr Ranges encouraging tourists to either spend more time in the region or come back again.

Gran Gran Graves & Caves Trail: simple, easy terrain, shared use trail along old road to Gran Gran Corner. Establish simple car park at base of hill below grave site for driving visitors. Re-vegetate hillside up to graves with meandering walking trail to grave site. Loop trail from existing picnic site above caves around past rock wall and back to picnic ground. These sites afford opportunities to further educate visitors about the need for conservation as the caves are habitat for the vulnerable Southern bentwinged bat. These trails can be linked to the 'Overland Track Trail' connecting to the Glencoe region.

Hollands Lane Arboretum / Deciduous Tree Trail: Capitalising on the towns existing autumn aesthetics offers opportunity to link the 'Poplar Tree Trail' to Hollands Lane Arboretum 2km to the west of township with a corridor of deciduous species. Several historic sites of interest and old plantings offer points of interest along the trail. Future deciduous plantings would create a unique feel entering Mount Burr from Millicent direction. Replacement of damaged tree species signs and the introduction of seating and picnic tables would enhance and encourage visitor use. The arboretum is accessible via vehicle from Mt. Burr Road and may be marketed to driving visitors as a destination point of interest along the 'Limestone Coast Driving Loop'. This trail can be linked to Mt. Muirhead Lookout and connecting township trails to and from Millicent.

Overland Track Trail: This trail would be shared use walking, cycling and horse riding linking Mt. Burr trail network to the Glencoe region. Utilising wide breaks to the west of Overland Track this trail would incorporate historic elements associated to the overland track journey stopping at historic sites such as 'Mount Burr Bush Inn'. Numerous picnic rest stops with relevant information signage enable this trail to be traversed via road as a driving or motorcycle trail.

Wetland sites: Degraded wetlands to the west of the town adjacent the golf course road and adjacent to the east of Overland Track at Gran Gran Corner offer opportunities to rehabilitate and utilise for conservation educational purposes. Appropriate boardwalks and bird hides may be incorporated to enhance user interaction. It is believed that an old well is situated at wetland to the west on Mt. Burr Road. This may be a unique historic point of interest to capitalise on. Rehabilitation of these sites would improve biodiversity of the region and highlight Mt. Burr as a leader in community conservation.

5.0 Project Benefits

Community Benefits

Many local members of the community currently enjoy the town and surrounds for a range of outdoor activities and would benefit significantly by offering safe, structured areas to do so.

Promoting healthy living in a sustainable environment is core to project objectives and will provoke thought and encourage community engagement surrounding environmental issues.

A lack of structured activities, safe outdoor spaces and clear direction means young residents are left to their own devices to keep entertained. By engaging younger residents, project involvement can give them a sense of pride for their community and themselves and help promote sensible outdoor activities around the town.

Creating professional quality mountain bike trails and events throughout the Mount Burr Ranges will encourage use by professional athletes offering direct contact with respected role models for the regions youth to look up to.

Encouraging all local residents to take part in planning and development will build a closer community and allow all concerned to play a concerted role in shaping the future of the town.

Working together as a community and allowing all voices to be heard and catered for is of upmost importance for project objectives to be achieved.

Involving Mount Burr Primary School with the propagation of native plants and revegetation of degraded areas will encourage pupils and associated families to play an active role in biodiversity conservation. Children can see *their* planted trees grow as they do, helping to build a lasting connection with their natural environment.

Health Benefits

Promotion of healthy, safe and structured activities for our residents is of high priority to the 'Mount Burr Recreational Trail Network'.

By offering varied options of physical outdoor activities, our younger residents will be more inclined to find an activity suited to their liking creating healthier bodies and more resilient minds better equipped to handle future opportunities.

Engaging in a project such as this has clear physical health benefits for the community but can also see great improvements in resident's mental health. A sense of self-worth and attachment to community spaces will help build a stronger, more connected community with pride in our surrounds.

Environmental Benefits

Improving habitat by eradication of declared weeds, re-vegetation of appropriate degraded spaces and the introduction of native display gardens would not only improve on the town's aesthetics but also create healthy ecosystems for native fauna to flourish, enhancing the tranquillity and building upon the towns existing atmosphere.

Mount Burr Recreational Trail Network
- *Project Proposal*

Economic Benefits

Project development has the potential to create numerous economic opportunities for the residents of the region by offering unique selling points to market abroad.

Existing, listed local businesses that may capitalise on project development and increased traffic to the area include:

- | | | |
|----------------------------------|---|----------------------------------|
| • Mount Burr General Store | - | <i>(hospitality)</i> |
| • Burr Cottage | - | <i>(accommodation)</i> |
| • Old Mill Country Retreat | - | <i>(accommodation)</i> |
| • South East Vegetation Services | - | <i>(conservation management)</i> |
| • Hands With Heart Massage | - | <i>(relaxation services)</i> |

Potential for entrepreneurial business investment and future employment opportunities include:

- | | |
|---------------------------------|--------------------|
| • Accommodation | • Tour guides |
| • Cleaners | • Equipment hire |
| • Restaurants / Eateries | • Vehicle hire |
| • Local produce ‘Tasting Rooms’ | • Event promotions |
| • Chefs / Cooks | • Vehicle mechanic |
| • Wait staff | • Souvenirs |
| • Local producers | • Retail staff |
| • 4wd Facilities / Tracks | • Artists |
| • Tour operators | • Musicians |

Regional industries and businesses that may capitalise on project development and increased traffic to the region include:

- Hospitality
- Tourism
- Retailers
- Supermarkets
- Service stations
- Construction
- Manufacturing
- Primary producers

Mount Burr Recreational Trail Network
- *Project Proposal*

6.0 Project Partners

The following is a list of potential partners or sponsors to the 'Mount Burr Recreational Trail Network' project that may have invested interests in further development:

- Wattle Range Council
- Forestry SA
- Onefortyone
- SA Water
- Nature Glenelg Trust
- Native Vegetation Council
- Natural Resources South East
- Department of Environment, Water & Natural Resources
- Walking SA
- SA Tourism Commission
- Mount Burr General Store
- South East Vegetation Services
- Burr Cottage
- Old Mill Country Retreat
- Hands With Heart Massage Therapy

Responses from Forestry SA (FSA) and Wattle Range Council (WRC) have been extremely positive as project objectives are inline with their respective future management actions.

Both FSA and WRC have offered to assist project objectives any way they can provided structured planning, goals and costs are established.

7.0 Funding & Investment

Utilising the strategic support of key stakeholders and the skills of the local community will allow the establishment of a recreational trail network to be achieved with minimal outsourced funding.

However, to secure future funding through federal, state and/or local government will require an incorporated community organisation to be established enabling funding proposals to be put forth.

Community projects that promote healthy living and can deliver clear economic and social benefits are highly commended through funding approval stages.

'Mount Burr Recreational Trail Network' project proposal aims to capitalise on these criteria to ensure funding approval for future project development.

8.0 Complimentary Projects & Infrastructure

General Infrastructure

By reaching a target tipping point of enough unique experiences will warrant visitor attention and encourage outside visitors to stay for longer periods generating the need for further major infrastructure upgrades to keep up with demand.

Some of which may be council investments where as others may be opportunities for private investment.

Car parks, RV dumpsites, camp grounds, toilet amenities, cooking facilities, and storage facilities are several areas that could be introduced to compliment the establishment of Mt. Burr as a destination to outside visitors.

Without the inclusion of some of this infrastructure this project and future associated projects can not evolve beyond initial stages.

Dirt Bikes

Local dirt bike riders will be encouraged to engage with project development in an attempt to establish safe places for residents and visitors to ride dirt bikes legally and avoid misuse of established walking, bicycling and horse trails.

Local riders would be advised to establish a group specific to their needs and work together to establish worthwhile places to ride safely.

There is potential to establish a 'Mt. Burr Ranges Dirt Bike Hub' by utilising quarry site west of township on Mt. Burr Road. This site could consist of safe riding tracks and information signage and maps of the Mt. Burr Ranges. These signs would contain information regarding safe use of forest tracks and legal places to ride throughout the ranges. Establishing safe places for residents and visitors to ride motorcycles is of upmost importance to the overall trail network to avoid misuse of established infrastructure. To ensure the tranquillity and peaceful feel of the township, worthy dirt bike trails must be established at a reasonable distance to the township. This site may also be used in conjunction with existing local events such as The Pines Enduro. Numerous quarry sites are littered throughout the Mount Burr Ranges and may also be utilised for this purpose creating safe, marked trails between each suitable site.

Four Wheel Driving

Due to primary industry and conservation, safe public spaces are lacking throughout the Mt. Burr Ranges for 4wd owners to drive legally. Legal 4wding is somewhat limited to the coastal dune areas.

There is an opportunity for private entrepreneurial investment in a 4wd park facility in the area where willing patrons can test their skills with their mates in a safe, legal setting. Numerous facilities like this have been established around the country with great results for the 4wd community, some of which have turned into large annual events bringing much needed visitors to their respective regions.

Horse Riding

Opportunity is there for the already close knit horse riding community to utilise existing groups to develop complimentary trails within the 'Mount Burr Recreational Trails Network' helping build on the list of structured experiences in Mount Burr. Horse riding

Mount Burr Recreational Trail Network
- *Project Proposal*

can be a great way to explore our tranquil setting but can have specific needs, requirements and restrictions conflicting to walking and cycling trail safety. Much like dirt bikes, horse riding requires open spaces with longer trails but is still an ideal activity to link with the trail network. A historical trail along the Overland Track from Gran Gran Corner to Glencoe stopping at key sites such as the Mount Burr Bush Inn could be a potential trail specific to horse riding.

9.0 Town Events

Potential events to capitalise on Mt. Burr Recreation Park community event areas and town trail network are as follows:

Burr to Bluff Cross Country Mountain Bike Race: Utilising recreation park as the start and finish point for a professional cross country mountain bike race throughout the Mount Burr Ranges. This race would offer courses for novice (5-10km), intermediate (20-25km) and advanced (50-60km) riders each leaving and returning to Mt. Burr Recreation Park. This event would likely be held over a two day period with qualifying on day one and official races held on day two. Presentations at the end of day two would incorporate live bands to close the event. The two day event would incorporate food trucks, live music, Freestyle & Trials mountain bike displays and a pit area where patrons can interact with professional riders.

This event may take place the week before or after the annual downhill mountain bike event held in Mt. Gambier encouraging mountain bike enthusiasts and event riders to stay in the region for a week to see both events.

Sculpture Symposium: An annual symposium event held over several days. Sculptors would have specific criteria to meet each year and would be chosen based on suitability of their designs to meet guidelines set inline with town aesthetics. The event may be marketed as a 'Bush Sculpture Symposium' where visitors can view the sculptures being created over a suitable weekend period. These sculptures would then either become permanent additions to the trail network or potentially made available for purchase by the artist much like the popular 'Brighton Sculpture Competition' in Adelaide.

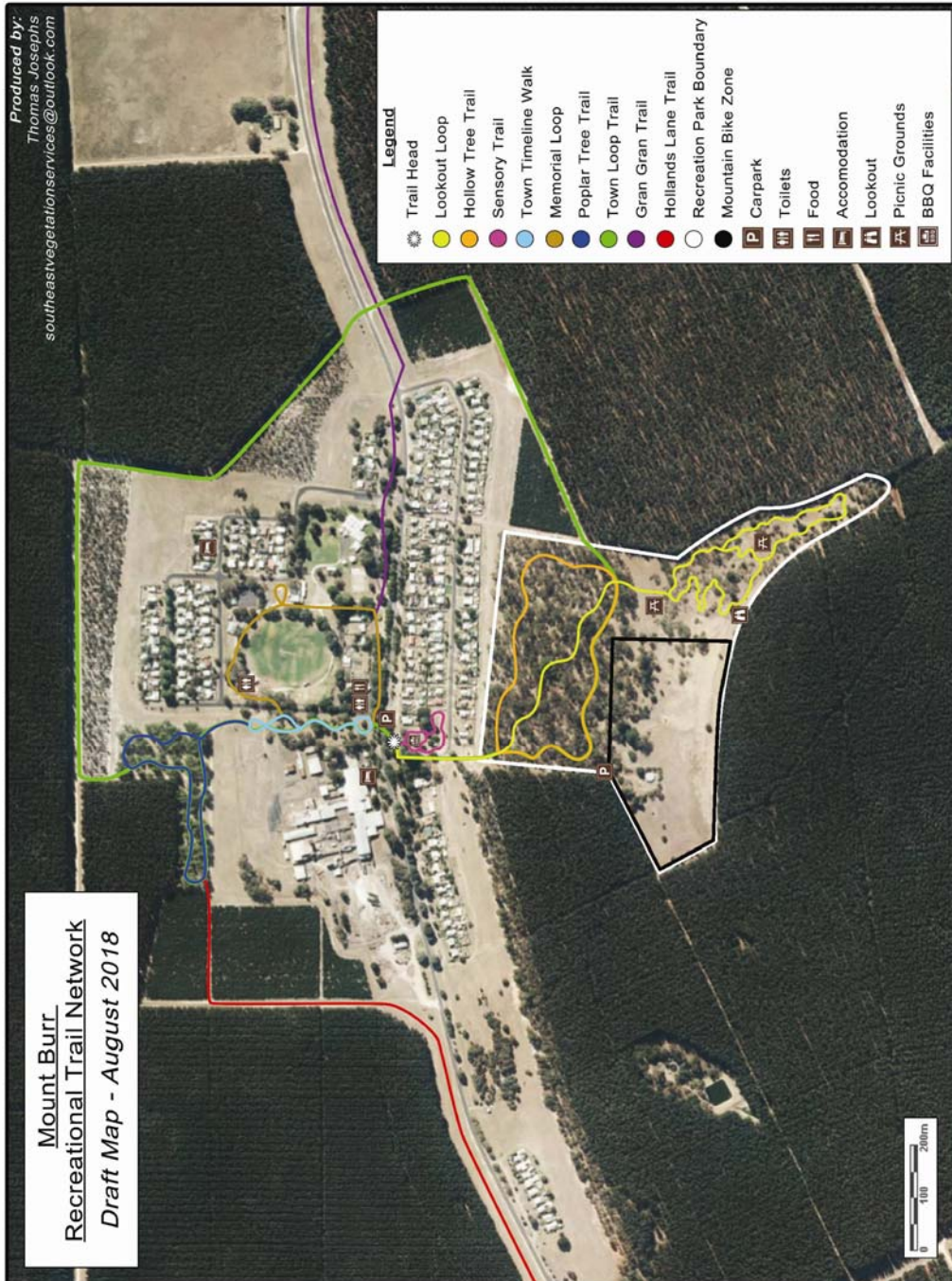
Healthy Living, Healthy Me Festival: This festival would be similar to a food and wine festival but would incorporate physical outdoor activities in replacement of the wine element. The festival would allow local food producers to promote their products through a unique event promoting healthy family living. The event would be somewhat of an 'Outdoor Recreation' expo with relevant businesses and companies showing new products. Mountain biking, dirt bike and horse riding equipment and apparel companies are but a few that could be part of the overall event.

This event would cater for all ages and promote family friendly outdoor activities.

Mount Burr Recreational Trail Network
- Project Proposal

10.0 Site Maps

The following pages contain simple maps highlighting the general idea of potential trails to be linked together in the vicinity of the Mount Burr Township.



Mount Burr Recreational Trail Network
- *Project Proposal*

11.0 Photographs of Interest

Below are photos of interest highlighting views and surroundings unique to the Mount Burr township.

12.0 Initial Stages of Project Development

For the purposes of evaluating the feasibility of project development, this section is compiled based on achievable timeframes and attainable funding for each component.

This proposal will focus on costing of professional consultation, materials, contracted labour and volunteer assistance required to establish the initial stages of the overall project.

Feasibility of further expansion will be explored in greater depth following post evaluation of initial stages of development.

Further trails and unique points of interest connected directly to this network will be developed in stages by Mount Burr Ranges Recreation Group, or similar, through future rounds of funding, donations and group fundraising.

With proactive consultation, planning and sufficient optimism the initial stages may be developed with overlapping timeframes aiming to capitalise on tourism trends while still in a state of growth.

Mount Burr Recreational Trail Network
- *Project Proposal*

12.1 Projected Timeframes:

Project timeframes are set to achieve overall goals within a 5 year period. Timeframes are only attainable provided communication and stage implementation is carried out in a strategic fashion with prompt response between key stakeholders.

Note: timeframes are a guide only and reflect the best educated presumption based on available information at the time of writing.

Stage 1 - Establish initial components of Mount Burr Recreation Park

0 – 12 months

Further additions implemented:

12 – 24 months

Stage 2 – Establish Trail Head Information Hub

0 – 6 months

Additional trail information added as each trail is completed:

6 – 36 months

Stage 3 - Play space & Sensory Trail

6 – 18 months

Stage 4 - Pettman Terrace Town Timeline Walk / Native Display Gardens

12 – 18 months

Stage 5 – Poplar Tree Trail

12 – 18 months

Stage 6 – Town Loop Trail

18 – 24 months

Stage 7 – Memorial Trail

12 – 24 months

Stage 8 – Gran Gran Caves & Graves Trail

18 – 36 months

Stage 9 – Hollands Lane Arboretum Trail

18 – 36 months

Stage 10 – Overland Track Trail

36 – 48 months

Stage 11 – Wetland Trails

48 – 60 months

13.0 Stage 1 - Establishment of Mount Burr Recreation Park

- 1.) Introduce a stacked loop system of marked and mapped, shared use walking and mountain biking trails highlighting unique flora, fauna, view points, conservation values and historical points of interest.
- 2.) Divide site into two main zones consisting of:
 - Shared use walking & mountain biking trails with picnic grounds, lookout points & bird hides
 - mountain bike specific trails & skills development areas
- 3.) Define several open space community event areas to be used for distinctive annual events and a central hub for competition events held in the Mt. Burr Ranges. These event areas may need to be cordoned off with bollards and/or strategic re-vegetation to prevent compaction and erosion issues caused by vehicle use.
- 4.) Introduce picnic areas with unique natural seating and table areas. Utilise local artists to create one of a kind designs that enhance the visitors experience and encourages interaction with the natural environment and landscape.
- 5.) Establish numerous lookout points with simple seating along a 'Lookout Loop Trail' with main lookout situated at the highest point within the park. Several sites are ideal for this purpose with the eventual view points being determined by safe trail design and feasibility of simple platform style infrastructure.
- 6.) Introduce educational signage containing information on flora & fauna and the importance of natural habitats eg. Natural hollows & vegetation structures.
- 7.) Introduce signage with historical photos & information of the site. Forestry SA has archived many photos, including aerial shots that may be suited for this purpose.
- 8.) Construct unique bird hides strategically placed to capture views of abundant native fauna within the park. These structures will be more aesthetically organic in design possibly marketed as 'Low impact fauna viewing pods', adding to the visitor interaction with the natural environment. Potentially design as an 'Audio-visual fauna viewing pod' aimed at enhancing the natural sounds of the bush for visually impaired.
- 9.) Establish a small car park to cater for 10-12 cars at the base of mountain bike trails zone. A disused horse yard of approximately 300m² situated at the base of the proposed mountain bike trail area with all trails descending to this point is ideal for this purpose. Two of the car park perimeters are already lined with tall, majestic eucalypts acting as natural bollards and adding to the connection visitors will build with the natural feel of Mount Burr Recreation Park. This car park must be designed to cater for towing vehicles eg. Possible mountain bike shuttles. Note: this site is next to the SA Water managed town water supply and may lie over easements for water services. For this reason this site may not be suitable for this purpose.
- 10.) Designate a site to be opened only to cater for higher number of vehicles during community events. The most suitable site for this purpose is situated at the base of the proposed mountain bike zone on the opposite side of water tanks from the smaller car park. As with the smaller aforementioned car park this site is

Mount Burr Recreational Trail Network
- *Project Proposal*

accessible directly off of Brown Street via a well maintained crushed dolomite track or via plantation compartment track to the west off of Mount Burr Road which can be slippery in wet conditions.

13.1 Stage 1 - Prioritised Actions

- 1.) Costing and funding requirements of project stages.
- 2.) Consult with relevant landholders and key stakeholders including local residents, Wattle Range Council, Forestry SA, Onefortyone, DEWNR, SENRM, SA Water, etc.
- 3.) Gain relevant landholder permission.
- 4.) Establish proactive volunteer community group focused on project development.
- 5.) Develop general proposal for use to generate interest & to consult with contractors and parties of interest.
- 6.) Consult with professional trail and park designers.
- 7.) Establish percentage of volunteer versus contractor assistance for project development.
- 8.) Gain approval of overall project development.
- 9.) Establish official project timeframes.
- 10.) Remove rubbish and old fencing from site. Possibly split between volunteer & contractor. Old fencing & other large debris removed by contractors with general rubbish items removed by volunteers on 'Clean up Australia Day'.
- 11.) Start process of removing declared weeds from site. Contractor managed, assisted by volunteers.
- 12.) Confirm design of overall recreation park.
- 13.) Establish revegetation sites. Break into stages of community planting days and primary school involvement.
- 14.) Establish appropriate perimeter fencing, bollards and visitor car park site.
- 15.) Establish designated trails for walking and mountain bike riding including trail markers and pamphlet design.
- 16.) Introduce descriptive educational information signage.
- 17.) Establish seating and picnic areas including lookout points.
- 18.) Establish picnic grounds with appropriate infrastructure.
- 19.) Establish bird hides to capture views of native fauna.

Mount Burr Recreational Trail Network
- Project Proposal

13.2 Stage 1 - Project Costing Requirements

All materials and services will be sourced from local suppliers and businesses as much as practically possible creating beneficial outcomes to local economy.

Materials

Timber products	Quantity	Cost
bollards		
fence posts		
trail markers		
seating		
tables		
signage		
general timber for construction of seating, tables, bird hides & boardwalks		
wooden stakes for tree guards		
Hardware items		
screws		
bolts		
metal signage		
fencing wire		
Other items		
trail base material eg crushed limestone		
concrete		
natural elements eg large rocks & logs		
indigenous seedlings		
tree guards		
Services - Establishment		
Site clean up / Preparation - Contractor	15 hours	
Site clean up / Preparation - Volunteer	4 hours	
Weed control – Primary	10 hours	
Trail Establishment including marker installation to specification.	100 hours	
Recreational Infrastructure eg. bird hides, picnic tables &		

Mount Burr Recreational Trail Network
- *Project Proposal*

seating.		
Re-vegetation – Planning & Management		
Re-vegetation – Volunteer labour		
Services - Ongoing		
Trail & Infrastructure Audit - Annual		
Trail & Infrastructure Maintenance		
Weed control – Follow up		
Site clean up - Volunteer		
Marketing		
Trail pamphlets - Design		
Trail pamphlets - Printing		
Social media		
Website		